

# Prime Restaurant/Pub Space at Esquimalt Town Square

2930  
SQFT FOR  
LEASE



ESQUIMALT ROAD

Esquimalt  
Town  
Square



The Arbutus (34 Condos)

The Douglas (34 Condos)

The Mill (33,000 SF of office space)

The Spruce (34 rental units)

# ESQUIMALT

17,655 Residents

Median Household income: \$76,000

Median Age: 42

24% of Households are Family

2,930 SF for Lease

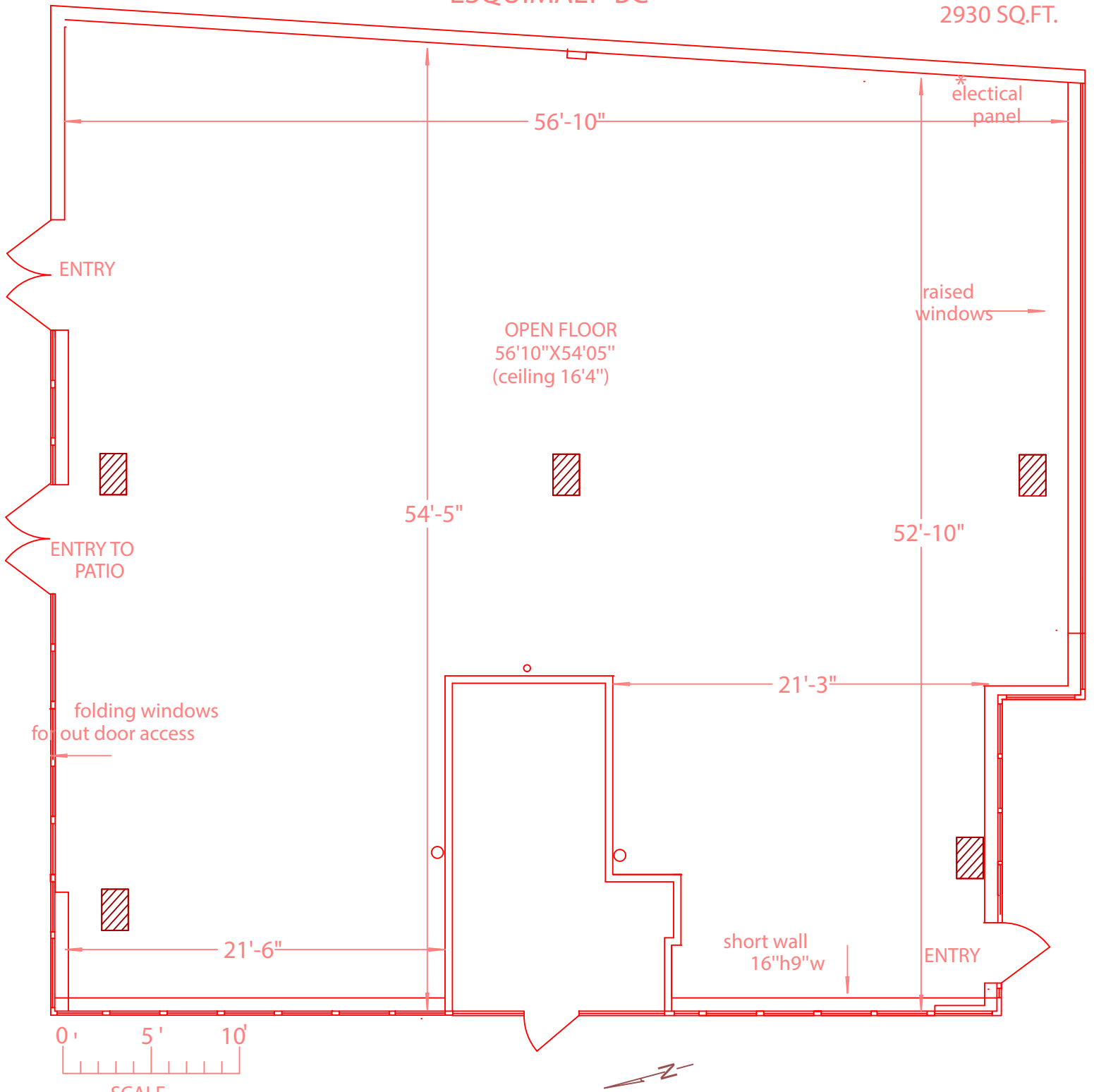
\*based on 2021 Census information

Esquimalt is a growing community that is home to over 17,655 residents and to a Canadian Forces Base, the Community's largest employer. Esquimalt's stunning coastlines, green spaces and urban pathways highlight its tranquil location surrounded by water. Despite being an established community, the Township still provides exciting opportunities for new commercial, residential, and industrial developments.

## Esquimalt Town Square

101 -505 PARK PLACE  
ESQUIMALT BC

2930 SQ.FT.



101-505 PARK PLACE  
ESQUIMALT, BC

FILE 80155

DATE MEASURED:  
APRIL 17, 2023

PREPARED FOR THE  
EXCLUSIVE USE  
OF RENT AT ETS

PLANS MAY NOT BE 100% ACCURATE,  
IF CRITICAL OWNER TO VERIFY



**2,930 SF**

We have one retail unit available for lease.

This unit is 2,930 sf and includes ample windows and is complete with a kitchen exhaust vent for easy connection. The unit fronts on to Esquimalt Road and also has direct access through the beautiful sliding glass Nano Wall system that opens up to the public plaza at Esquimalt Town Square. There is a 600 sf patio that flows onto the public plaza that is exclusive to the tenant of this unit. The prospective tenant will instantly be a popular part of the new Esquimalt Town Square and a regular meeting place for all residents of Esquimalt.

# The Modern Town Square

## Ample Amenities

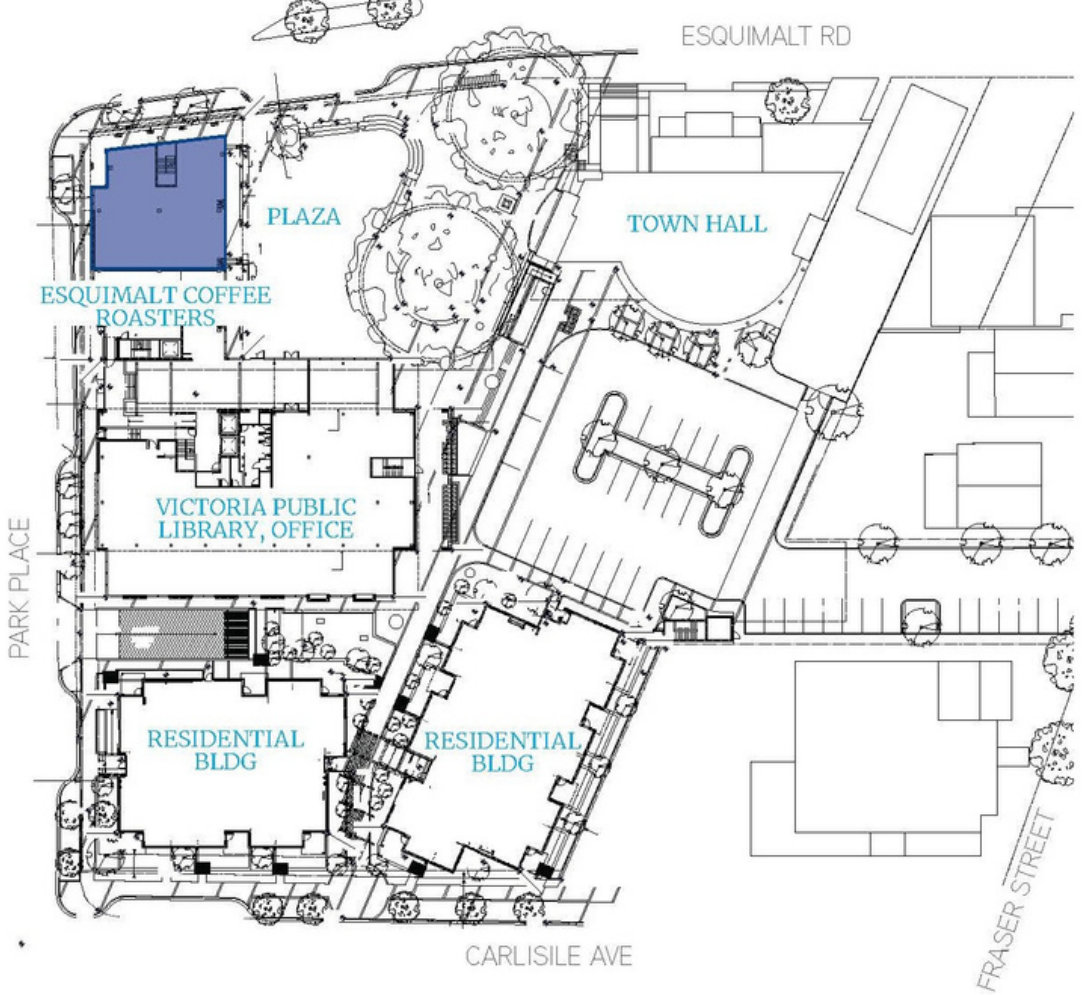
- Geothermal Heating and Cooling
- Surface and Underground Parking available for both tenants and visitors
- Abundance of Natural light
- Patio space

## The Public Art Walk: An Open-Air Gallery

The art walk enriches the public plaza, offering a place where residents and the wider community can pause and feel inspired.

## 68 Condos Sold Out and 34 Rental Units Fully Leased

Both condo buildings, The Douglas and The Arbutus, are completely sold out and occupied. In addition, The Spruce, the rental building is fully leased, with an extensive wait list.



**Esquimalt Branch of  
Victoria Public  
Library and  
Esquimalt Roasting  
Company Form Part  
of Esquimalt Town  
Square**



**Esquimalt  
Town  
Square**

# ARAGON

PROPERTIES LTD.

ARAGON.CA/ETS

## CONTACT

MIKE LOWE  
604.732.6170 EXT. 110  
MLOWE@ARAGON.CA

## VISIT

505 PARK PLACE  
ESQUIMALT, BC  
V9A 3P1

This document has been prepared by Aragon Esquimalt TC Properties Ltd. (Aragon) for advertising and general information only. Aragon makes no guarantees, representations, or warranties of any kind, expressed or implied, regarding the information including, but not limited to, warranties of content, accuracy, and reliability. Any interested party should undertake their own inquiries as to accuracy of the information.

Aragon Esquimalt TC Properties Ltd. excludes unequivocally all interfered or implied terms, conditions and warranties arising out of this document and excludes all liabilities for loss damages arising there from. The publication is the copyrighted property of Aragon Esquimalt TC Properties Ltd.

Esquimalt  
Town  
Square